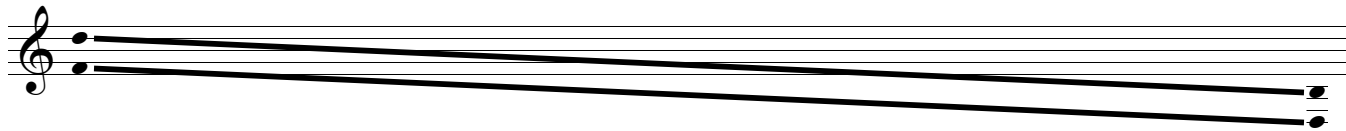
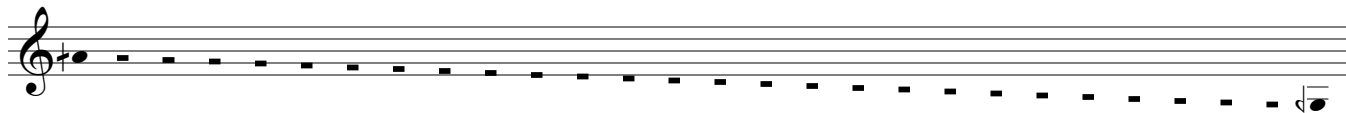


*Quartet*

for alto flute, clarinet, violin and cello



The violinist and cellist descend as slowly as possible while maintaining the harmonic relationship 5:3.



The flutist and clarinetist each regularly produce unvarying sustained tones at the pitch equidistant from that of the violinist and cellist, yielding the harmonic relationship 40:31:24. The tones should last one breath and may overlap.

Tashi Wada  
December 2006