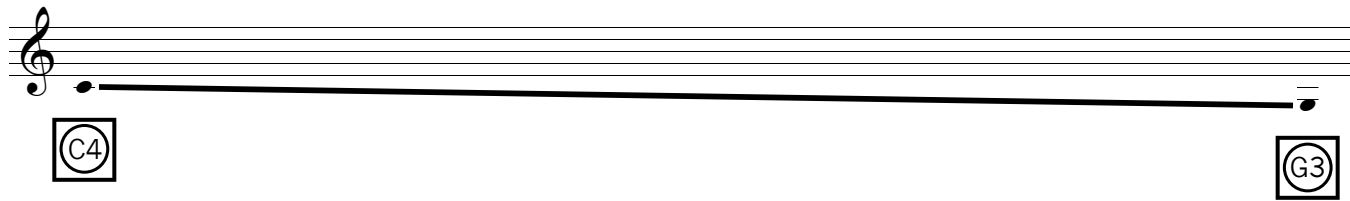


Pitch Distance to Wall
for violinist with two sustained tones



Two sustained tones of the same timbre are fixed to a wall, one at each end. The pitch of the tone positioned stage right is C4 and stage left is G3. The violinist descends as slowly as possible from C4 to G3, while moving as slowly as possible from stage right to stage left. In other words, the violinist moves so pitch distance parallels physical distance.

Tashi Wada
February 2008